

3 things

1. *Time you started to look at data sheets for polythene*
2. *New novel diffusion additives*
3. *The affect of chemicals on polythene*



PRODUCT DATA SHEET

PRODUCER	PLASTIKA.KRITIS.SA
PRODUCT	KRITIFIL.UV.2495

DESCRIPTION	3:layer, long:life, colorless, UV:open, high.strength, medium.diffusing.greenhouse.film
RESIN(S)	m:LLDPE, EVA
NOMINAL.THICKNESS.(mic)	140
AVERAGE.THICKNESS.TOLERANCE	±.5%.on.nominal.thickness
THICKNESS.TOLERANCE.AT.ANY.POINT	±.15%
SULFUR./CHLORINE.LIMITS.(ppm)	300./80

<i>MECHANICAL PROPERTIES</i>	TYPICAL VALUES	VARIATION	TEST.METHOD
TENSILE STRENGTH AT BREAK (MPa)			
:MACHINE.DIRECTION	30	: 5%	EN.ISO.527:3
:TRANSVERSE.DIRECTION	30	: 5%	EN.ISO.527:3
ELONGATION AT BREAK (%)			
:MACHINE.DIRECTION	600	: 5%	EN.ISO.527:3
:TRANSVERSE.DIRECTION	650	: 5%	EN.ISO.527:3
IMPACT RESISTANCE (FLAT) (gr)	1200	: 5%	ISO.7765:1.(A)

<i>OPTICAL PROPERTIES</i>	TYPICAL VALUES	VARIATION	TEST.METHOD
Total light transmission (400-700 nm)(%)	~.88:89		EN:2155:5
Diffusion (400-700 nm) (%)	45	± 5%	EN.2155:9
UV transmission (300-390 nm) (%)	UV:open		INTERNAL.METHOD
Infrared Transmission (7-13 μ) (%)	n/a		EN.13206.§.8,9

Version.250613



We hereby certify, that the product assigned as per the above, meets the standard manufacturing specifications, according to the plans established by our Quality System based on ISO 9001:2008.

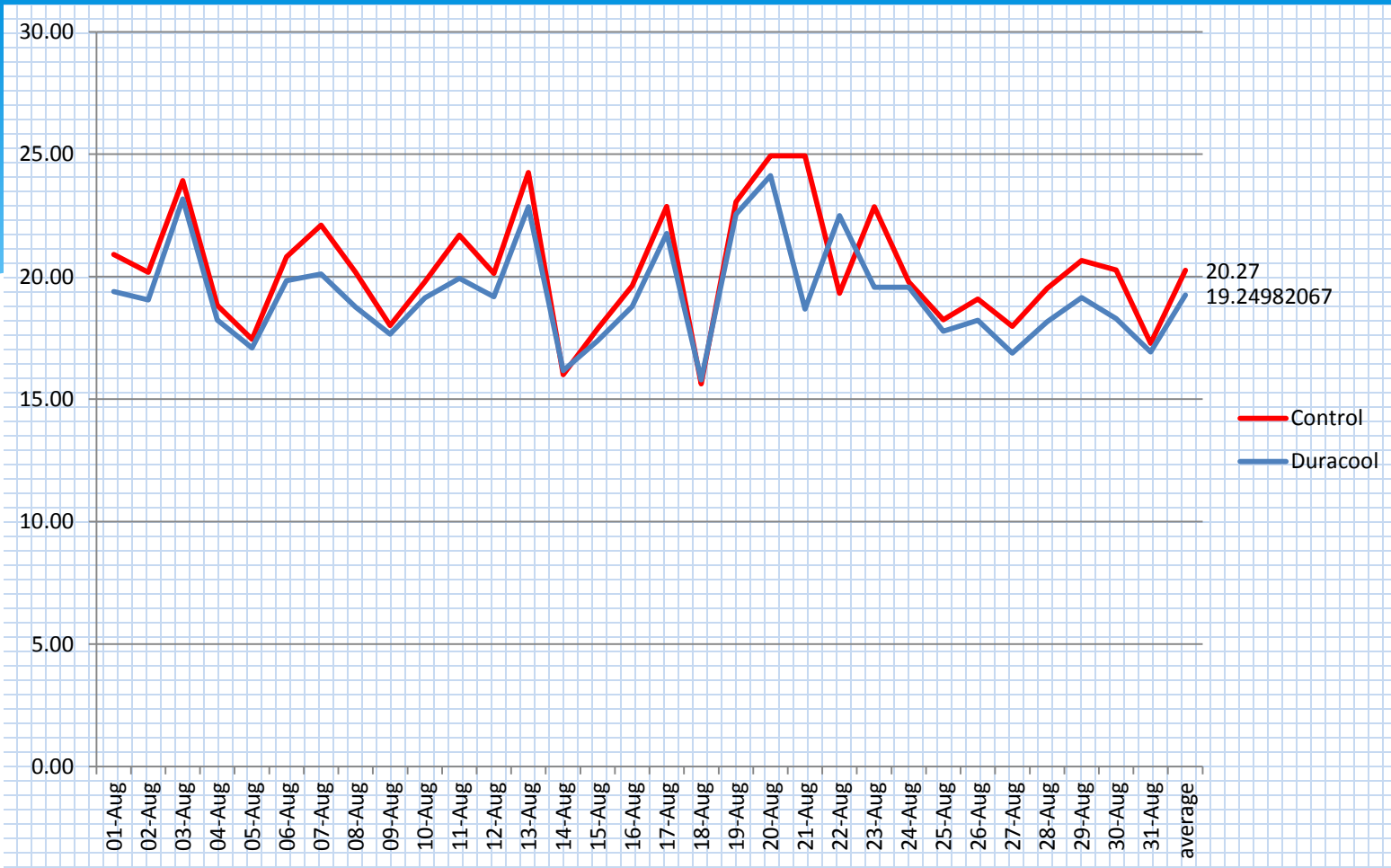
New Novel Cooling Additives

DuraCool









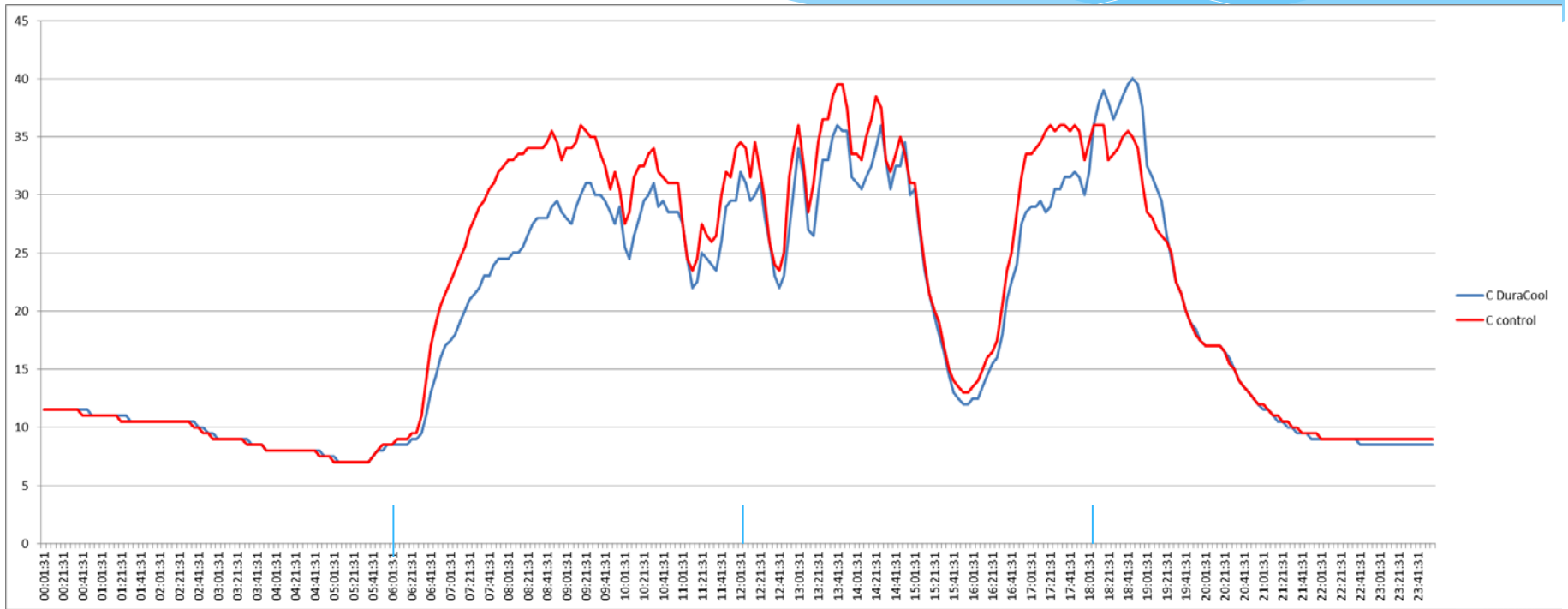
August 2015



The month began unsettled with westerly winds and rain belts crossing the country at frequent intervals. During the rest of the month, brief settled spells alternated with periods of more changeable weather.

Temperatures and rainfall were generally close to the long-term average for all regions. The provisional mean temperature for August was 0.1 °C below the long-term average, and Scotland received 99% of average rainfall. Sunshine was 107% of average, and sunshine totals were generally above average in eastern Scotland, but close to average in the west.

August 1st 2015



The affect of Chemicals on polythene



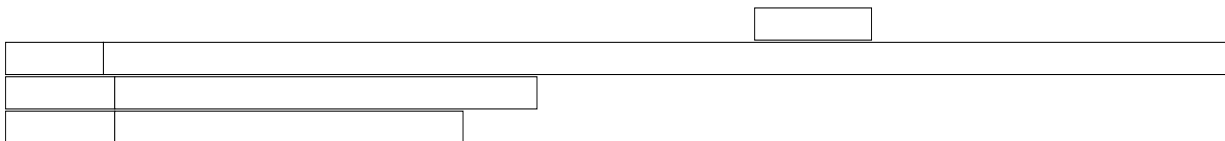
UV Stabilisers HALS - Nickel Quench – NOR HALS

Sulphur - Chlorine - Copper

Standard Sulphur resistance 300 ppm - Chlorine 80



sample	original	(1 season)			(2seasons)			(3 season)		
		a	b	c	a	b	c	a	b	c
Thickness (mic)	150	150	150	147	155	151	163	154	155	148
Transmission (%)	90,7									
Diffusion (%)	35,1									
IRT (%)	17,2									
Chemical Analysis										
S (ppm)	-	758	151	590	516	407	365	337	408	365
Cl (ppm)	-	134	46	59,3	115	11,4	205	61	68	112
Mechanical Properties										
Tensile strength at break (MPa)										
MD	28,3	12,6	29,0	17,1	19,1	24,0	19,5	17,4	22,5	14,9
TD	27,9	13,0	28,7	14,7	27,3	31,3	31,2	25,6	23,2	20,3
Elongation at break (%)										
MD	572	398	637	506	441	462	395	563	557	373
TD	653	560	600	545	726	691	647	633	706	624



Analysed 3000 ppm sulphur – over 5000 ppm Chlorine

2 levels of increased resistance

DuraLight + 600ppm

Sulphur Safe

